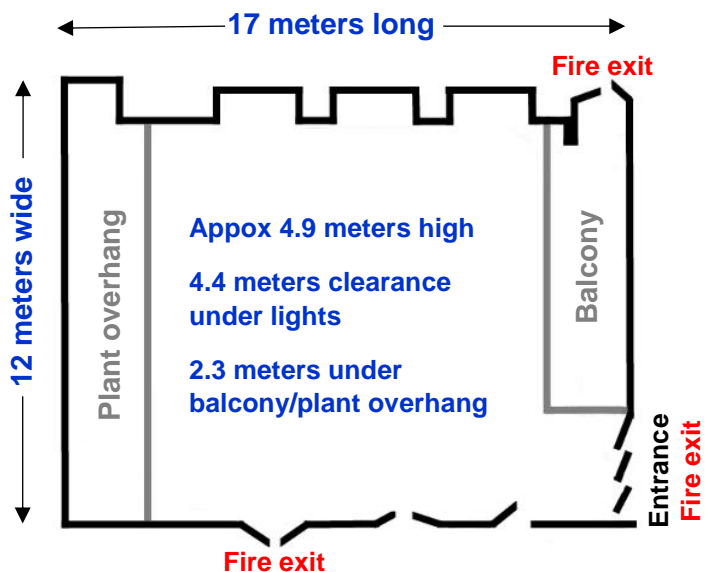




The Main Hall



Capacity

- Maximum 170 seated
- Maximum 200 in the space

Sound Limit

Amplified sound: 87dBA 09:00-22:30

Tables and Chairs



Square tables x 2
75 x 75 x 72cm

Tables x 10
150 x 75 x 72cm

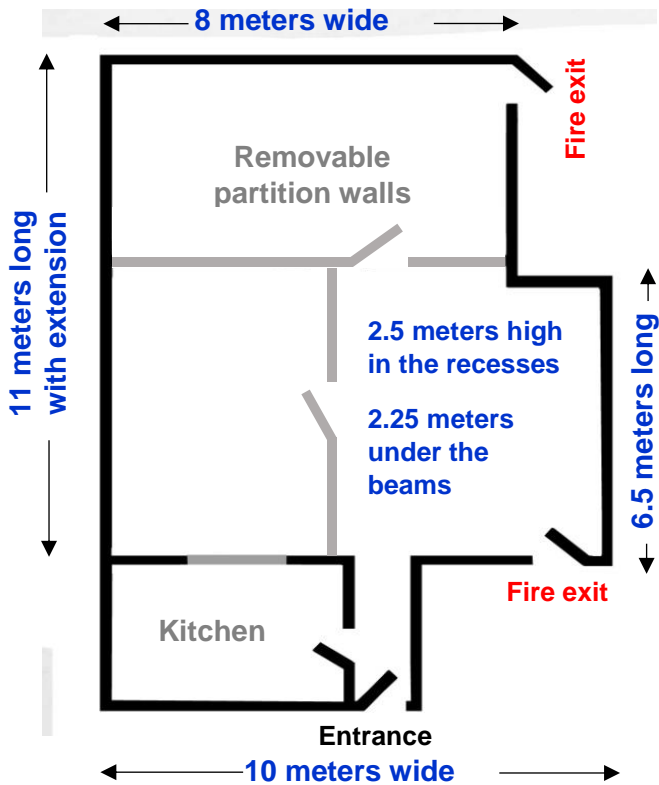
Trestle tables x 20
180 x 75 x 75cm

Black cloth chairs x 70
(20 with arms, 50 without)
Oak ply chairs x 110

Restrictions

No sports/ballgame activities - no roller skates or blades - no paper confetti - no smoke machines or indoor fireworks - Go-Cart and other activities only permitted where floor protection is provided - Messy activities must have protection for surfaces and suitable time allowed for clear-up - No alterations or variations are permitted to the structure, electrical services, fittings or existing decorations of the space.

The Small Hall



Carpeted floor

Capacity

- Maximum 70 seated with partition
- Maximum 100 seated with extension

Sound Limit

Amplified sound:
80dBA 09:00-21:30



Tables and chairs

3 desks tables available in the space
Additional tables available by arrangement

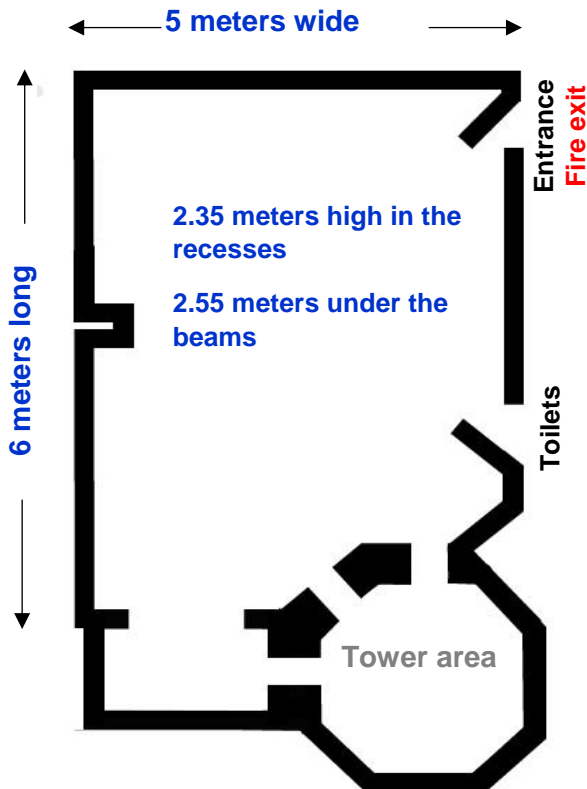
2 stacks of Oak ply chairs

**Hall can be partitioned into
2-3 rooms**

Restrictions

No sports/ballgame activities – no food to be eaten in small hall – no microphones – no smoke machines or indoor fireworks – messy activities must have protection for surfaces and suitable time allowed for clear-up – no alterations or variations are permitted to the structure, electrical services, fittings or existing decorations of the space.

The Crèche space



Lino floor
Small carpeted tower area

Capacity

- Maximum 30 adults seated
- Maximum 32 kids seated

Sound Limit

Amplified sound:
80dBA 09:00-21:00

Tables and chairs

1 trestle space set up in space
4 additional tables available by arrangement

1 stack of black cloth chairs

Childrens tables x 4

183cm long x 61cm wide x 51cm high

Childrens chairs x 20

Restrictions

No sports/ballgame activities – no microphones – no smoke machines or indoor fireworks – messy activities must have protection for surfaces and suitable time allowed for clear-up – no alterations or variations are permitted to the structure, electrical services, fittings or existing decorations of the space.